



Building Performance Equipment, Inc.®

Sustainable, Reliable, Energy Efficient, Ventilation Systems



BPE-XE-MIR 4000 Commercial Installation Specifications and Guidance

BPE Inc.
80 Broadway, Hillsdale, NJ

Phone: 201-722-1414
Fax: 201-722-0999
bpequip.com





Building Performance Equipment, Inc.®

Sustainable, Reliable, Energy Efficient, Ventilation Systems

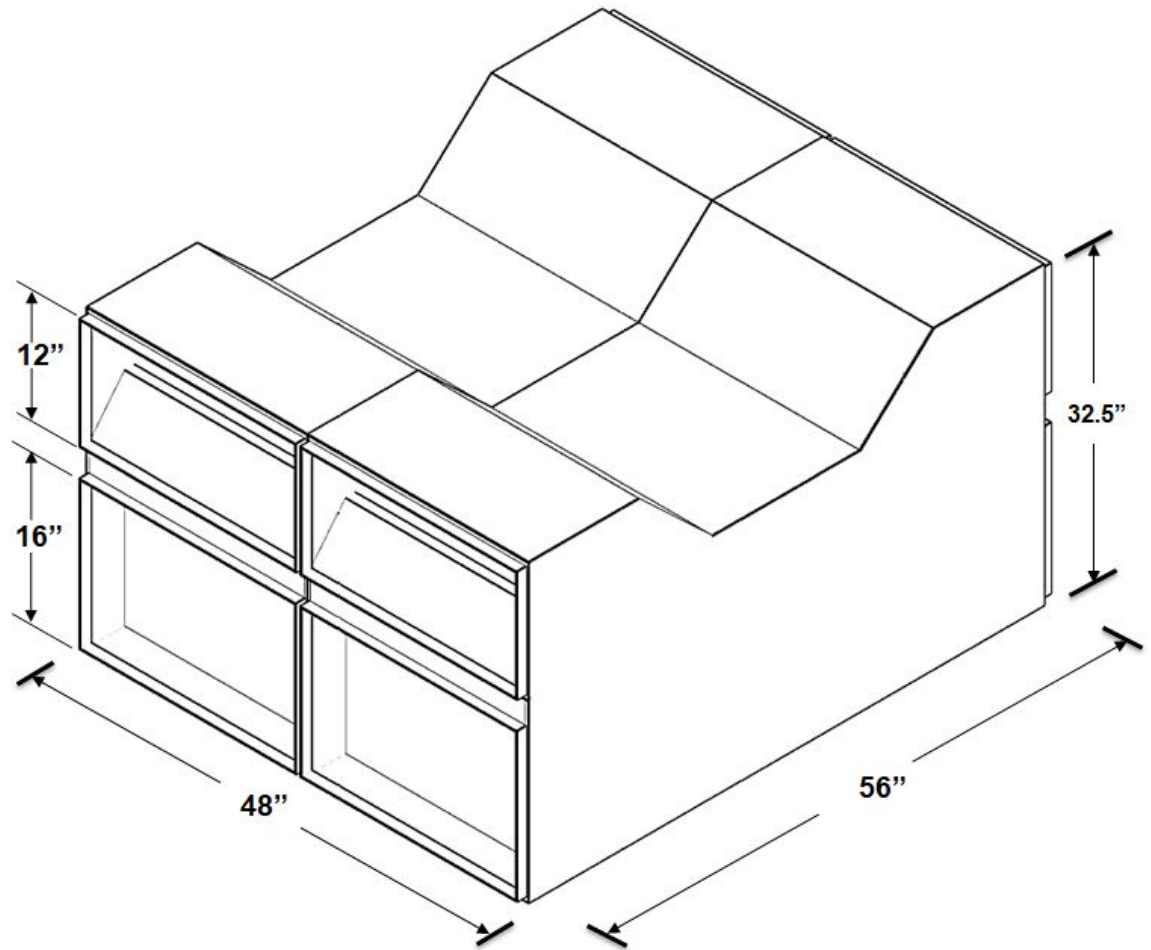


Here at Building Performance Equipment Inc., we are committed to engineering energy efficient HVAC systems. We specialize in ventilation and energy recovery with our current product line. This document is intended to illustrate the assembly of a commercial 4000 cfm ERV with all necessary components and information provided. Please contact us at 201-722-1414 if you have any questions.

BPE-XE-MIR 4000

Specifications

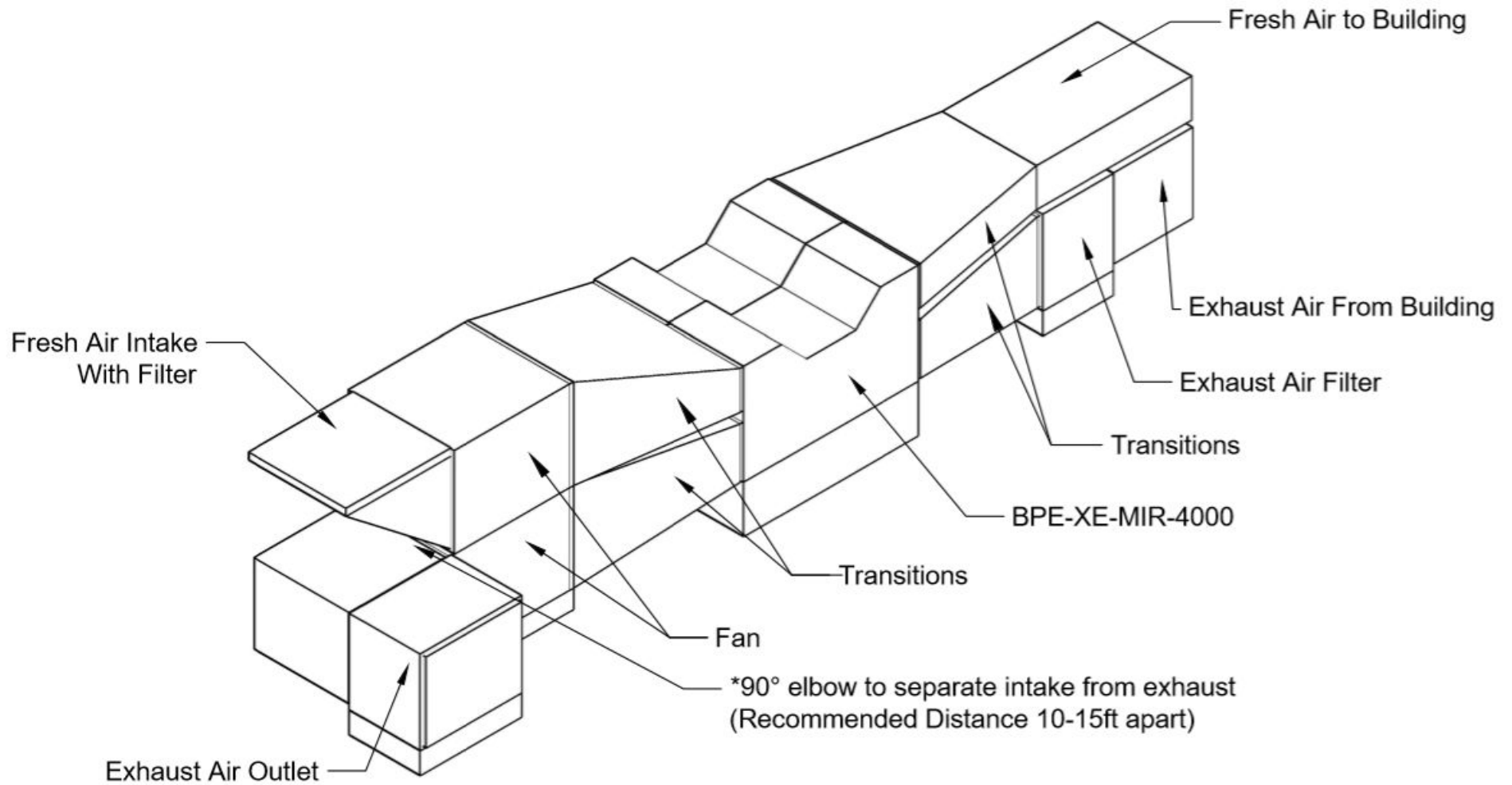
Model Number	BPE-XE-MIR 4000, Energy Recovery Ventilator (ERV)
Ventilation Type	Fixed Plate Polymer, Heat and Humidity Transfer
Typical Air Flow Range	1000-4000 cfm
Thermal Efficiency	82% @ 2500 cfm 90% @ 1500 cfm
Product Weight/ Shipping Weight	404 lbs./444 lbs.
Shipping Dimensions	(2) 72" x 48" x 37"
Typical Fan	CANARM 9215-VIB Inline Duct Blower (See page 8)





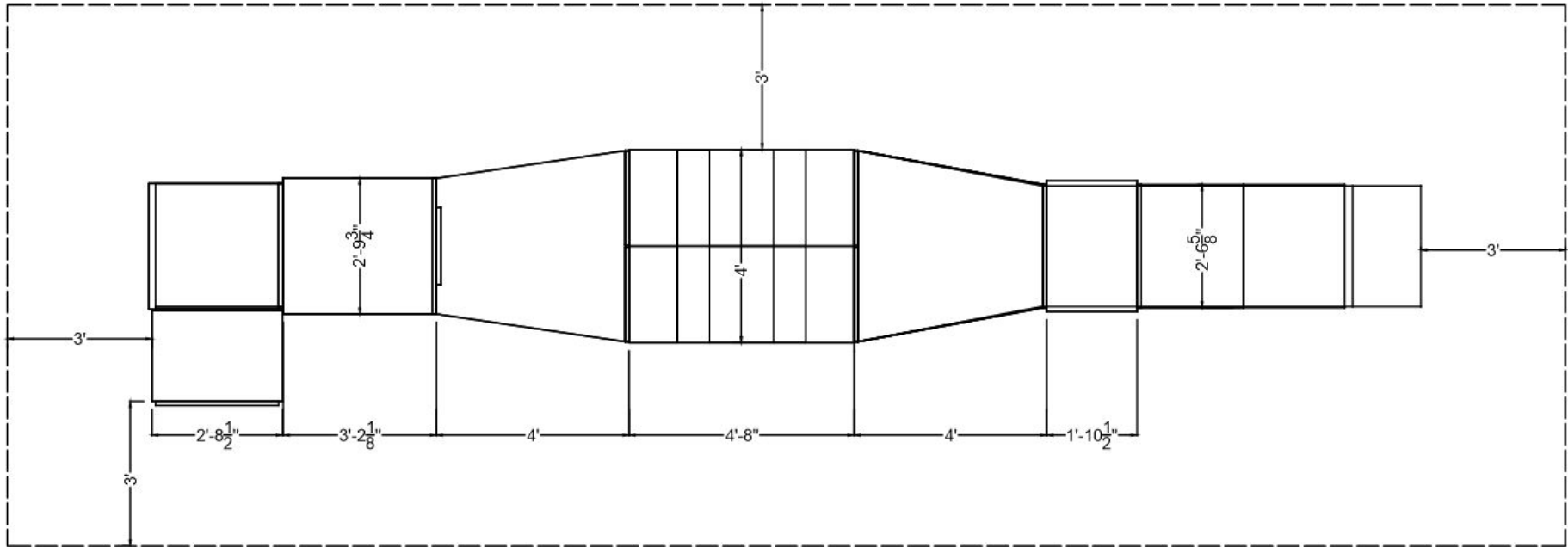
BPE-XE-MIR 4000

Layout





BPE-XE-MIR 4000 Layout

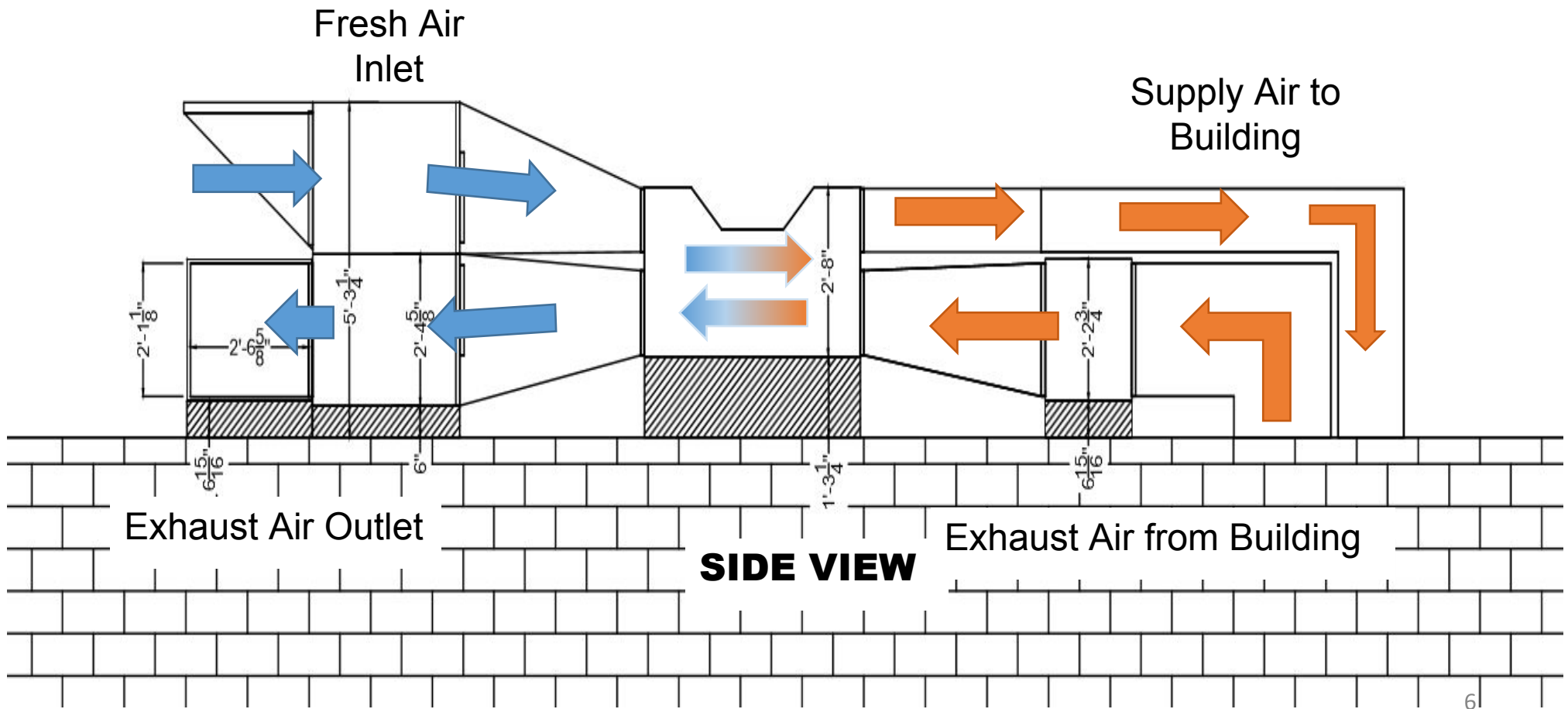


*Recommended 3' space around perimeter of unit setup for accessibility

**TOP
VIEW**

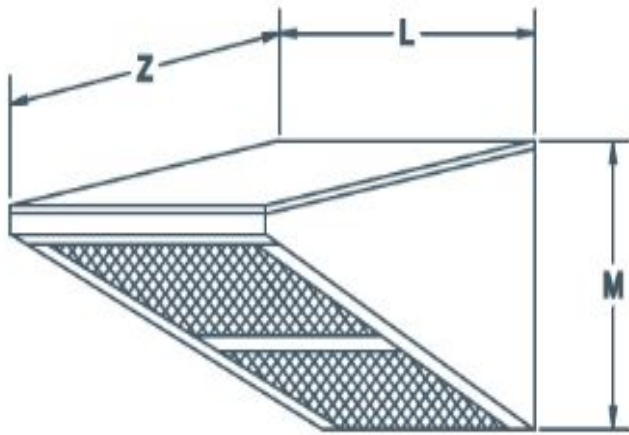


BPE-XE-MIR 4000 Layout



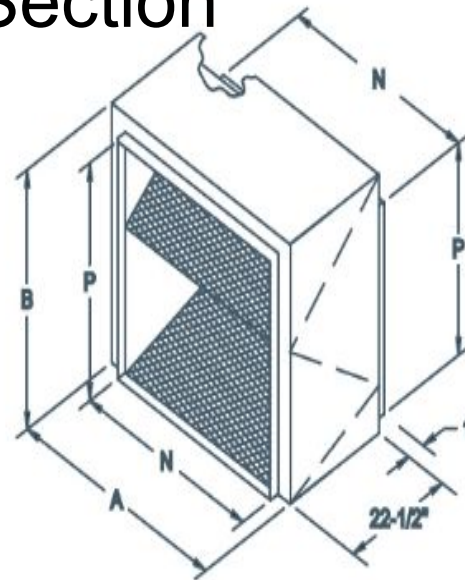
Intake Hood & Filter Selection

H9215 Intake



L	31 3/16"
M	25 13/16"
Z	33 1/2"

F9215A Filter Section



A	32 1/2"
B	26 3/4"
N	30 5/8"
P	25 1/8"



Fan Selection

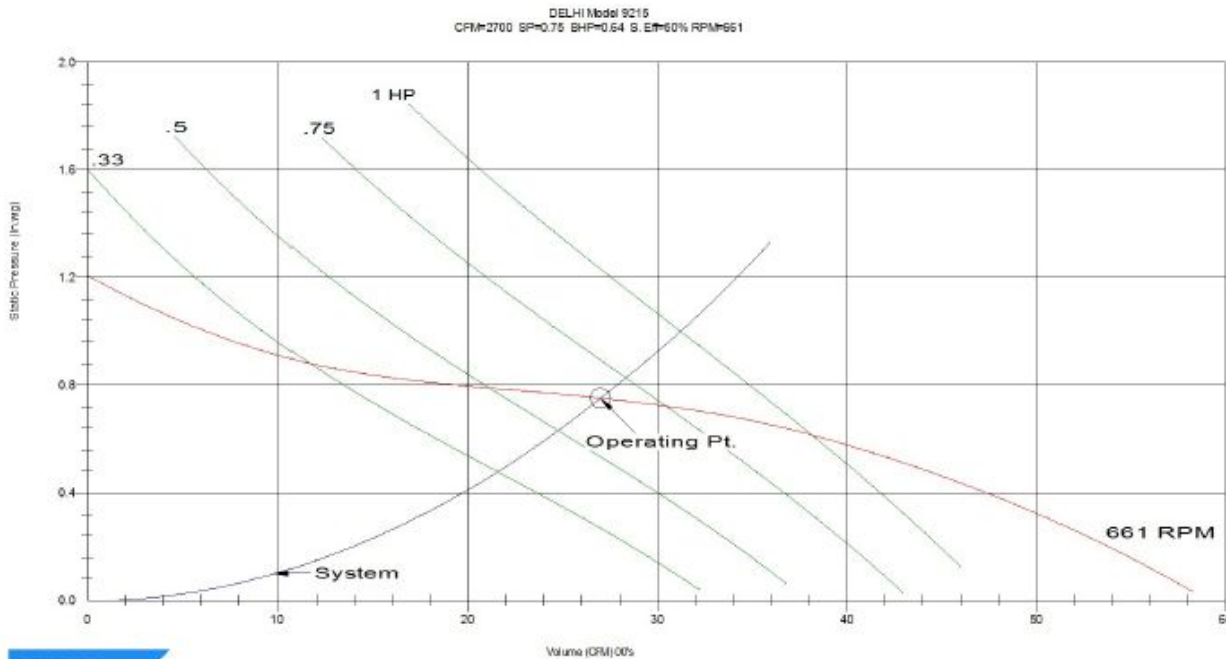
Model Information

Model: 9215	Part Number: 9020036	
CFM: 2700	Shaft Diameter: 1	Unit Weight: 176
SP: 0.75	Wheel Diameter: 15.28	Ship Weight: 214
RPM: 661	Tip Speed: 2644 FPM	
BHP: 0.64	Static Efficiency: 50	Elevation: 0
	Outlet Velocity: 1165 FPM	Temperature: 70

Sound Data

Sound Power Level @ Frequency, re: 10 ⁻¹² Watts	63	125	250	500	1000	2000	4000	8000	(Hz)	LwA: 70
	78	79	73	65	61	59	56	50	(dB)	SONES: 10.1
	Ducted inlet <u>or</u> ducted outlet dBA @5 ft. 59					Ducted inlet <u>and</u> ducted outlet dBA @5 ft. 39				

Performance Curve



Canam certifies that the 200, 200-2, 9200 and 9200-2 Series Duct Blowers shown herein are licensed to bear the AMCA Seal. The ratings shown are based on tests and procedures performed in accordance with AMCA Publication 211 and Publication 311, and comply with the requirements of the AMCA Certified Ratings Programme.

Performance certified is for installation type B: Free inlet, Ducted outlet. Power rating bhp does not include transmission losses. Performance ratings do not include the effects of appurtenances (accessories). The sound ratings shown are in loudness values in fan sones at 1.5m (5ft) in a hemispherical free field calculated per AMCA 301. Values shown are for Installation Type B: free inlet hemispherical fan sone levels. Twin unit data is derived from tests of single width fans.

v. 13.0.15



Fan Selection

Drive Information

Motor Pulley 8400 x 5/8" \ 8500036	Turns Open 2.5	Blower Pulley MBL107 \ 8500007	Bushing H x 1 \ 8500063	Belt B59 \ 8200059
---------------------------------------	-------------------	-----------------------------------	----------------------------	-----------------------

Motor Data

Motor HP and Type 1 ODP	Volts/Phase 115/208-230/1 Phase	Frame 56	Motor RPM 1725	Position 1	Canarm Part Number 1MD114
----------------------------	------------------------------------	-------------	-------------------	---------------	------------------------------

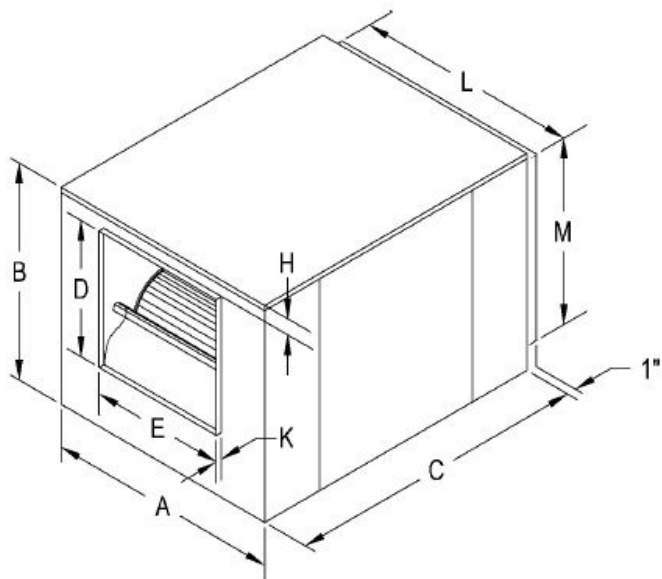
Options

IH-F Filtered Intake Hood

Dimensions

Model: 9215

(Inches)



<u>A</u>	<u>B</u>	<u>C</u>	<u>D</u>	<u>E</u>	<u>H</u>	<u>K</u>	<u>L</u>	<u>M</u>
33.75	28.625	38.125	17.0	19.625	2.125	1.125	30.625	25.25

Standard Features

9200 Series Duct Blowers (In-line Cabinet Fans)

- Forward curved wheel provides quiet, low rpm operation.
- Cabinet is galvanized steel for outdoor use.
- Baked on textured green polyethylene powder coat finish.
- Fiberglass insulation reduces noise, condensation, and energy costs.
- Self aligning Pillow Block Bearings.
- Access panels for convenient motor mounting on either side.